



Horizontal and Vertical Options

Standard and Bespoke Products Available

Communicate via HTML, HTTPs, SNMP, XML

Multiple Sockets Types Available

Environmental / Security Ports, as Standard

Product overview

iPower Manufacture and Supply a complete range of 3 Phase Intelligent Power Distribution Units, as Multi Socket or Inline Units (Link Box) to meet client's specific requirements.

Features

- ✓ Overall / Strip Level Monitoring
- ✓ Monitor up to 32 PDU's on a single IP Address
- ✓ Fitted and Remote RGB Display Option
- ✓ Free supplied/supported SNMP software
- ✓ Phase Balancing information
- ✓ Constructed using any socket type
- ✓ Receive email Alerts
- ✓ Easily configured and setup in minutes
- ✓ Simple migration to full DCiM
- ✓ Alerts on all set parameters

Product overview

The product can be supplied with all types of Monitoring Levels, from Overall or Strip Level Monitored (IP1) with NO restriction on Socket Type or quantity per Phase, to Individually socket Monitored (IP2), and Individually Monitored and Switched (IP3), For restrictions as to the socket number on the IP2 and IP3 see below.

We Can manufacture 3 Phase Power Distribution Units with Socket Monitoring and Individual Socket Switching in the following Configurations.

- 12 Way – 4 Socket Per Phase
- 24 Way – 8 Sockets Per Phase
- 36 Way – 12 Sockets Per Phase
- 48 Way – 16 Sockets Per Phase

All Styles of PDU, Provide Strip Level / Overall Monitoring per Phase of the following Metrics.

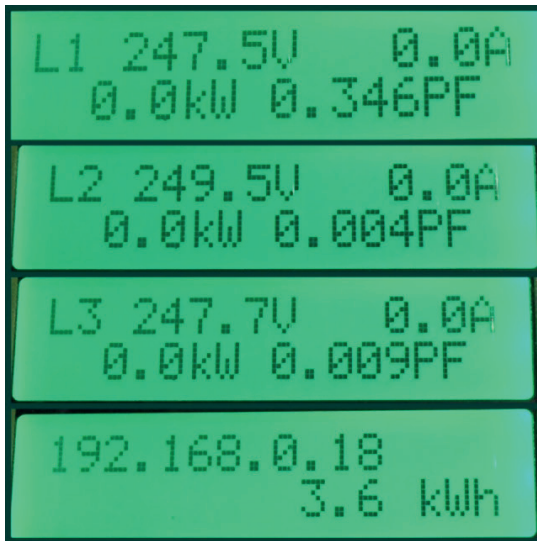
- Voltage (VAC)
- Current (Amps)
- Kilowatts (kW)
- Frequency (Hz)
- Power Factor (PF)

Plus, additional measurements of Peak Voltage, Peak Current, kVA, kWh, Kg/CO₂, BTU/h, kj/h, and Cost.

These Measurements are provided per phase by our billing quality meter, and displayed via the Web Browser or SNMP.

The scrolling RGB Display also provides information locally per phase for Voltage, Current, Kilowatts, and Power Factor, in addition the display also alerts alarm conditions by a change of colour and flashing to indicate an out of threshold event.





Some examples of Three Phase Power Strips are described below

Link Box, IP1, Overall / Strip Level Monitoring, Three Phase 3 Pin Neutral and Earth Commando Plug to 3PH + N + E Socket for Free Standing Equipment.

Break Out Box – IP1, Overall / Strip Level Monitoring, Three Phase 3 Pin Neutral and Earth Commando Plug – 3 x Single Phase Commando Sockets

Rack Mount Vertical PDU, these can be Built as an IP1, 2, 3, and 4.

- 12 Way, 12 x C13 Sockets (4 Per Phase)
- 12 Way, 12 x C19 Sockets (4 Per Phase)
- 18 + 6 Way, 18 x C13 Sockets + 6 x C19 Sockets (6 + 2 Per Phase)
- 24 Way, 24 x C13 Sockets (8 Per Phase)
- 24 + 12 Way, 24 x C13 Sockets + 12 x C19 Sockets (8 + 4 Per Phase)
- 36 Way, 36 x C13 Sockets (12 Per Phase)

Other combinations are available, using different types of Socket, and socket mix.



Environmental

iPower comes with comprehensive environmental monitoring including ports for:-

- 8 x Temperature sensors.
- 1 x Humidity/Temp sensor.
- 3 x sets of Volt Free contacts.



Security

iPower covers the requirements for cabinet security with ports for:-

- Electronic door locks.
- Card readers.
- Pin pads.
- Door contacts.



Communication

- Communicates over SNMP, HTTP, HTML and XML via inbuilt WEB Browser
- By Free of Charge SNMP management software
- Supplied MIB for integration into 3rd party DCIM
- Full DCIM solution available



Build Standard

- Full CE/WEEE/RoSH compliant
- Manufactured to BS EN 60950-1
- 5 year return to base warranty*
*subject to terms and conditions

